



Storm Goretti

Report by

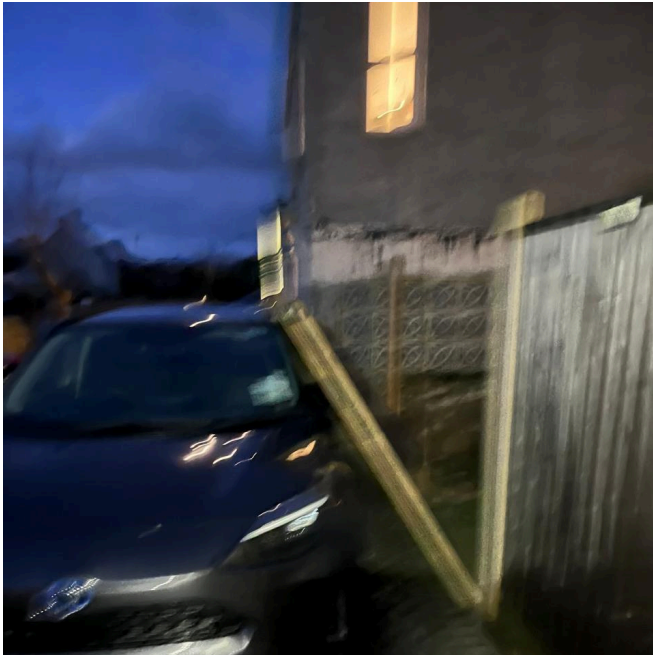
Joseph Tadd | Head Meteorologist & Reporter

Overview:

Storm Goretti hit the Channel Islands at around 17:40 GMT on the 8th of January 2026. Many had only just started going back to work or school when the States of Guernsey told everyone to be indoors by 6PM. What followed was said to be total havoc with winds of 80mph and gusts of 110 by only 9PM. Many woke up in the morning to find their houses badly damaged, roads covered in debris and schools closed. In the early hours of the 9th over 50 people had to be evacuated from some apartment blocks and relocated into hotels after the storm had caused serious damage. Overall, it was a shocking experience for many. During the report, all photo evidence was taken by our team or from verified sources.

Item 1: Fallen Fence





The fence was made of wood supported securely between concrete which was supported by two metal rods. The winds had caused one of the pillars to snap off, leaving the two rods untouched as shown in Image 1 & 2. This caused the pillar and two fence sections to fall on a vehicle as shown in Images 2 & 3, leaving minor damage on the car - including a few dents and scratches. In Image 1 we can also see chunks of the concrete pillar and some wood.

This was eventually repaired the day after (a few hours before writing this report).



(An Image of the repaired fence)

This was rated TL Storm 5 Damage (Low-end) Estimated winds of 70mph.

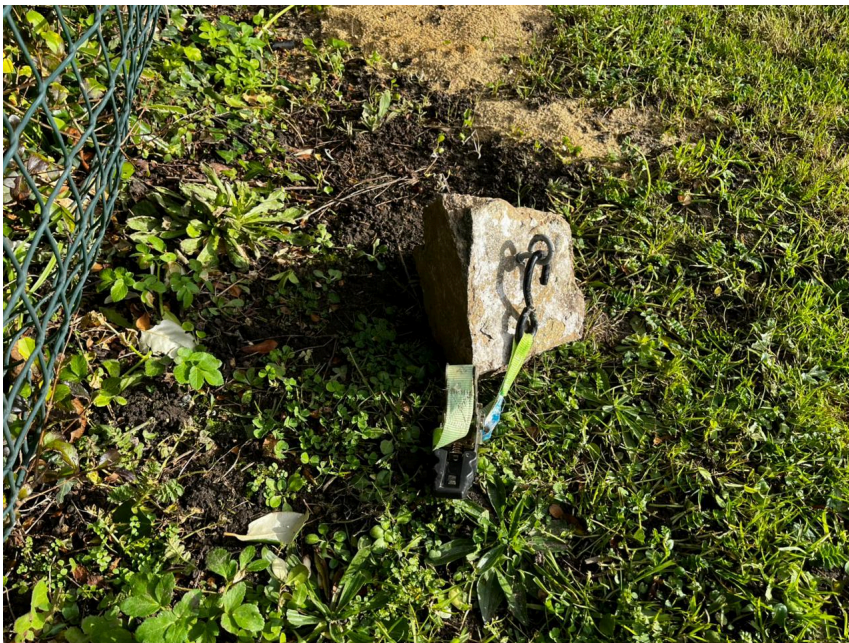
Item 2: Combined Trampoline, Wall and Telephone / Internet Line

This was the most serious damage as not only shows the concerning power of this storm but it cut the internet to the entirety of Leafland City.

Section 1: Trampoline + Wall



(Blue-line: Distance Rock Travelled)



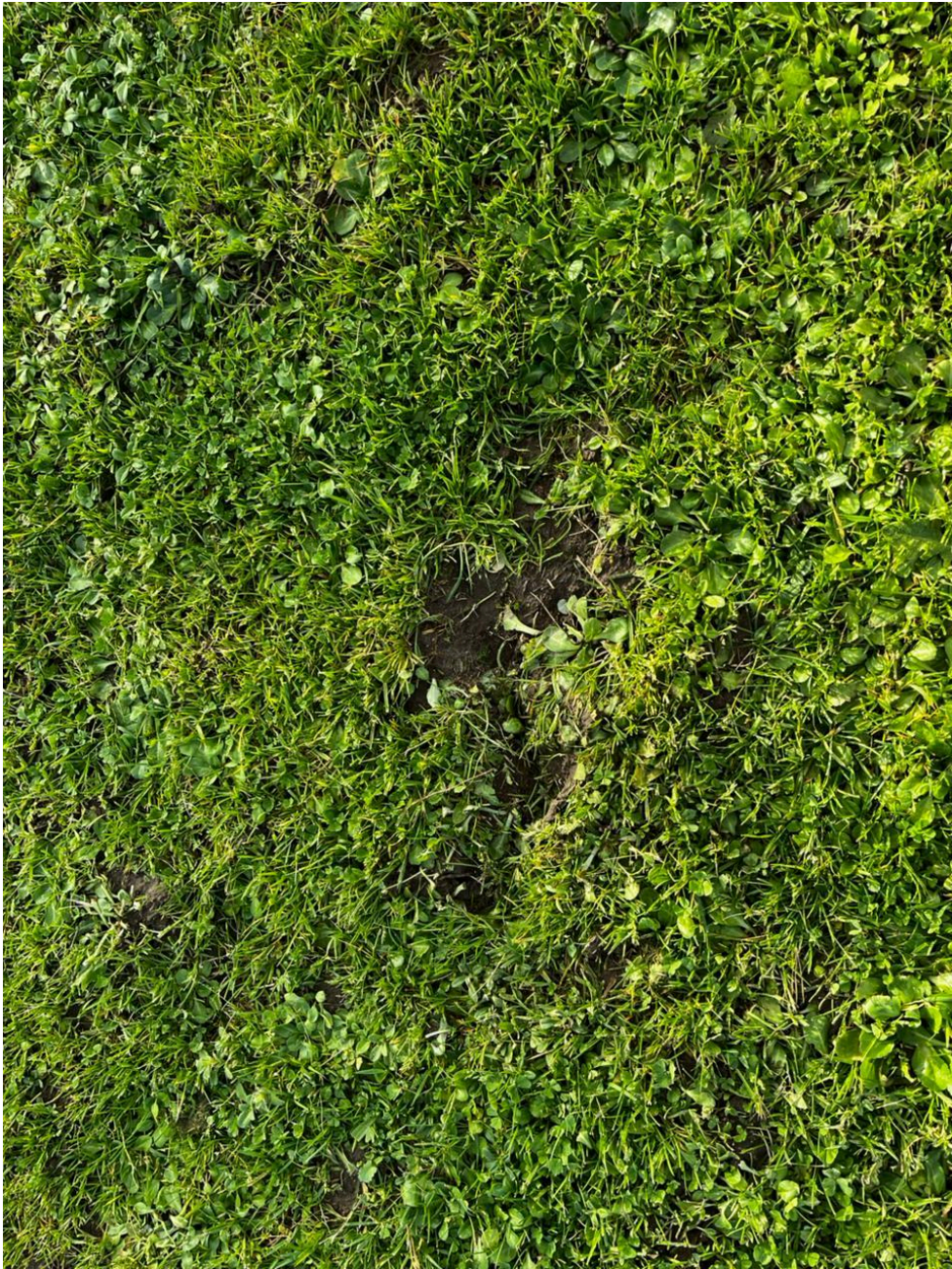




















During the storm, our anchored trampoline was blown away by the storm, causing an entire rock to come out of an extremely secure granite wall which eventually dropped almost 20 metres away from its original place (As seen in Image 1). The trampoline travelled a further 15 metres over the hedge and into a douit. We also can see the pegs that pinned the trampoline to the ground in Images 10, 11 & 12. We also see damage on the roof of the shed, most likely from the trampoline in Image 16.

This section alone was rated TL Storm 5 (High-End) with estimated winds of 80mph and a Meteorologist Note saying “Item exceeds scale limits. Estimated winds of 110mph.”

Section 2: Telephone / Internet Line





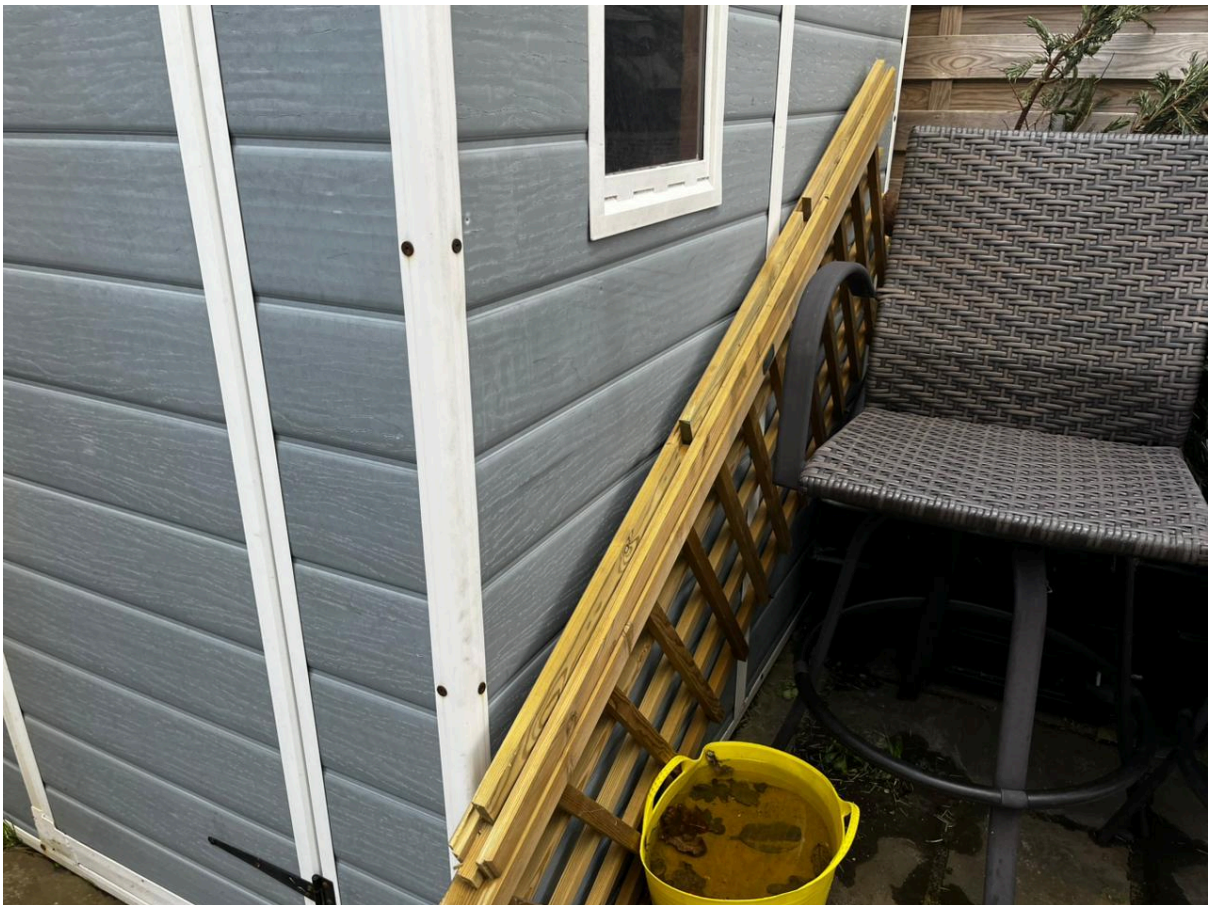
(The Red in both images is the Telephone / Internet & The Blue being a simple reference to the height, but isn't 100% accurate.)

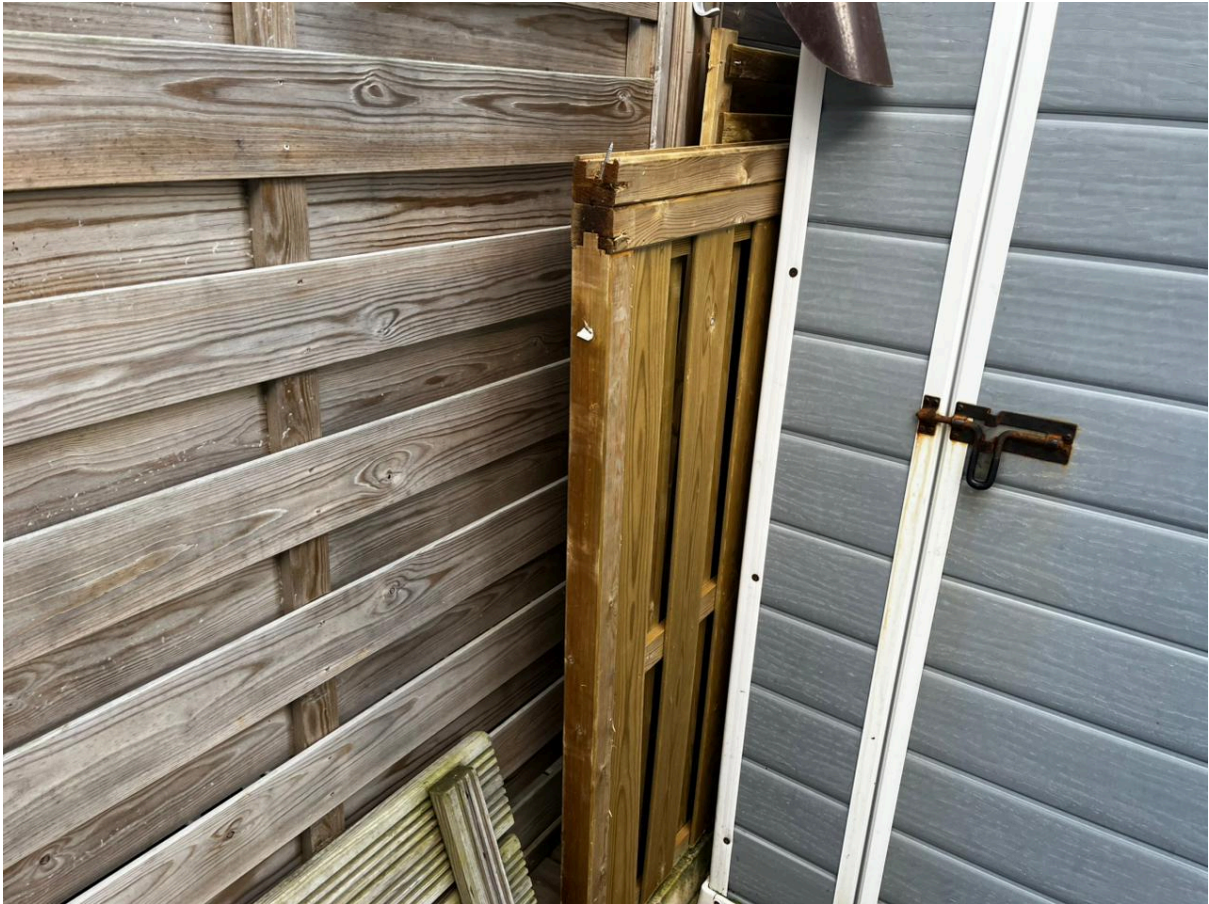
As the trampoline blew away, it caught onto the telephone line. We know this because the trampoline was tangled up with the line when retrieved the next day. From measurements made, the trampoline would have had to gain a minimum of 6 metres in height before reaching its end position, meaning in less than 2 seconds. This completely cut off the internet to Leafland City.

This section was rated TL Storm 5 (High-end) due to the amount of time it had to gain height and the effect it had on the Nation. Estimated winds of 80mph.

Item 3: Weak Fence







By the time of the report, it was already cleared up (Images 4 & 5). Though, after the storm it had completely come off and fallen on to the furniture (Image 1) with the only thing remaining being a plastic sheet which was intended to stop water splashing onto people lounging behind the pool, which is only up in the summer (Images 2 & 3).

This Item was rated TL Storm 4 (Mid-Range) with estimated winds of 60mph.

Item 4: Extra Debris & Damage











Starting off with the first 2 images, A notably sized twig was embedded into the wall, causing it to crack slightly. The next three are many sticks from bushes and trees that came off and ended up at the location shown in the images. Finally, the side wood piece of this DIY Solar Water Heating Solution came off with the bottom section of this glass that was still attached before the storm. These sharp plastic pieces were one of the many reasons the country went on lockdown early then the States of Guernsey advised.

This Item(s) was rated TL Storm 3 (Low-end) overall with estimated winds of 40mph.

Conclusion

Overall, the storm was devastating. The United States of Leafland is lucky that this was the only damage caused. The final rating was TL Storm 5 (High-end) with Estimated wind speeds of 80mph. This is the maxed out scale but accurate estimates say 110mph. **The final rating is TL Storm 5 (High-end) with estimated winds of 110mph - which is out of scale.)**

Tadd-Leafland Storm Rating System:

TL Storm 1 (10-20mph)

- Low-end: 10mph
- Mid-range: 15mph

- High-end: 20mph

TL Storm 2 (25-35mph)

- Low-end: 25mph
- Mid-range: 30mph
- High-end: 35mph

TL Storm 3 (40-50mph)

- Low-end: 40mph
- Mid-range: 45mph
- High-end: 50mph

TL Storm 4 (55-65mph)

- Low-end: 55mph
- Mid-range: 60mph
- High-end: 65mph

TL Storm 5 (70-80mph)

- Low-end: 70mph
- Mid-range: 75mph
- High-end: 80mph

Between one rating and the next (i.e TL Storm 1 & TL Storm 2), the high-end will continue up to the next rating's low end (i.e 24mph would be High-end TL Storm 1 but 25mph would be Low-end TL Storm 2 despite the high-end saying 20mph.)